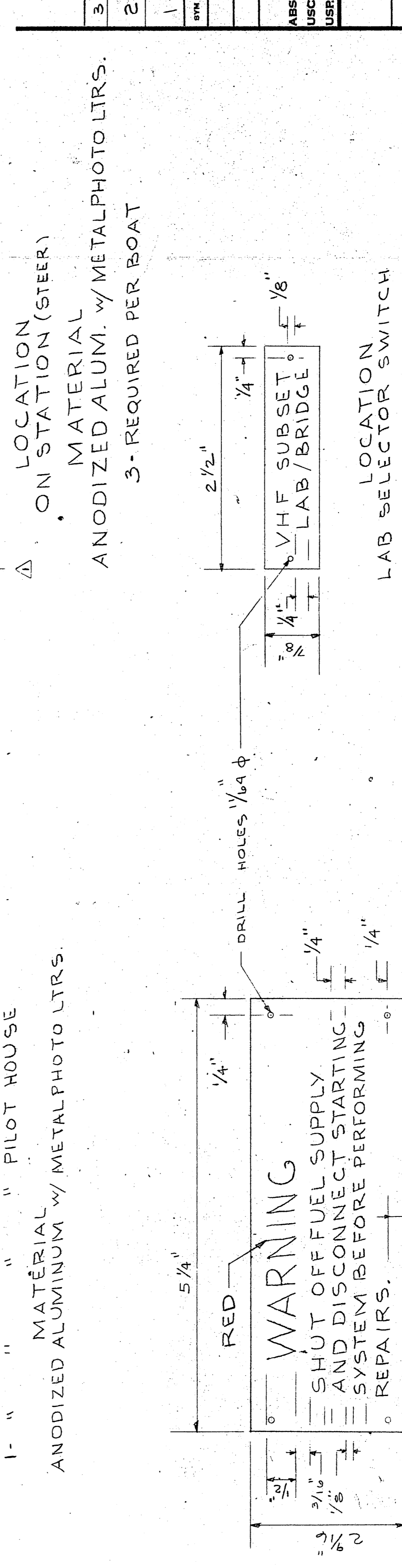
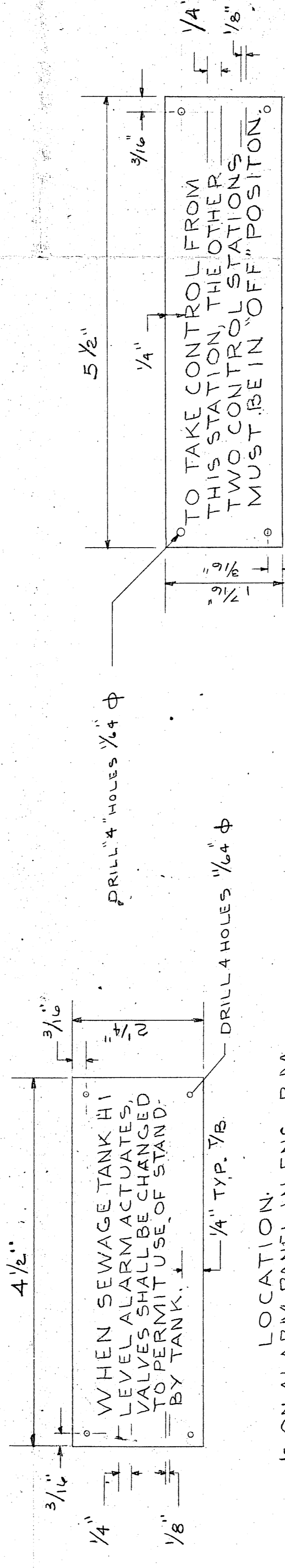


LIST OF ELECTRICAL NAMEPLATES

DESCRIPTION	QTY	MATL	LTR SIZE	LOCATION	REMARKS
ENG. RM. BLOWER No.1	1		1/4"	ON SWITCH OR MOTOR CONT.	BLACK LTRS.
BILGE PUMP No.1	1				
FIRE PUMP No.1	1				
BOW THRUSTER	3		3/16"	NEXT TO METER	
STEERING PUMP No.1	1		1/2"	ON BOX IN IN DECK LOCKER	BLACK LTRS.
PROP. CONTROL BACK-UP PUMP	2		1/2"	ON DISCONNECT BOX	
AIR COMPRESSOR No.1	1		1/2"	ON DISCONNECT BOX	
SEA WTR. PUMP No.1	1		1/4"	IN A/C ROOM	
LUBE OIL PUMP	1		1/4"	ON XMFR.	
HOT WATER CIRCULATION PUMP No.1	1		1/2"	ON DISCONNECT BOX	
DISINTEGRATOR	1		1/4"	ON BOX IN ENG. RM.	
POT. WTR. PRESS. PUMP	1		1/4"		
FUEL OIL PUMP	1		1/4"		
SEWAGE PUMP No.1	3		1/4"	IN DECK LOCKER	
SEWAGE SUMP PUMP	1		1/4"		
AIR COMP. (SEW. SYS.)	1		1/4"		
SALT WTR. CIRC. PUMP	4		1/4"		
SANITARY WATER PRESS. PUMP	1		1/4"		
CHILL WTR. PUMP	1		1/4"		
AIR COND. COMPRESSOR No.1	1		1/4"		
EVAP. CONTACTOR	3		1/4"		
ANCHOR WINDLASS	1		1/4"		
LAB SALT WTR. PUMP	2		1/4"		
INTERCOM SYSTEM	4		1/4"		
LAB CABLE	1,3		1/4"		
PATCH PANEL SYS.	1		1/4"	ON RECEPTIONTACLE	
LAB SERV. PANEL	1		1/4"	ON JUNCTION BOX	
GALLEY PANEL	1		1/4"	SELF-EXPLANATORY	
MAIN DECK LIG. PANEL	1		1/4"		
ENG. RM. LIG. PANEL	1		1/4"		
ENGINE ROOM MACHINERY POWER PANEL	2		1/4"		
HOTEL MACHINERY POWER PANEL	1		1/4"		
AIR COND. & REFR. MACHINERY POWER PANEL	1		1/4"		
AIR COND. & REFR. AUX. MACHINERY POWER PANEL	1		1/4"		
PAYLOAD SERVICE PANEL	1		1/4"		
LAB ELECTRONICS AND RADIO PANEL	1		1/4"		
115 VOLT AC ISOLATED LOAD CENTER	1		1/4"		
PILOT HOUSE ELECTRONICS PANEL	1		1/4"		
115 VOLT FEEDER DISTRIBUTION PANEL	1		1/4"		
PILOT HOUSE LIG. AND I.C. PANEL	1		1/4"		
PILOT HOUSE EXTERIOR LIG. PANEL	1		1/4"		
TOWING REEL	1		1/2"	ON UNIT. FWD. PORT SIDE FOCSLE DK.	
TRANSMITTER	2		1/2"	ON UNIT	

ELEC. CONT. A

DESCRIPTION	QTY	MATL	LTR SIZE	LOCATION	REMARKS
115 V. 1 φ	22		1/4"	NEXT TO RECEPTACLE	BLACK LTRS. THROUGH OUT BOAT
SEARCHLIGHT SW.	1		1/2"	SWITCH	BLACK LTRS. PILOT HOUSE
RED LIGHT	1		1/4"	SWITCH	
FLUORESCENT LT.	1		1/4"	SWITCH	
HEATER	1		1/2"	SWITCH	
BOW THRUSTER	3		3/16"	SWITCH	BLACK LTRS. - WHITE PLST. INT. (1) ANODIZED ALUM. EXT. (2)
BOW THRUSTER AMPS.	3		3/16"	NEXT TO METER	
A/C SWITCH BOX	2		1/2"	ON BOX IN IN DECK LOCKER	BLACK LTRS.
RADAR XMFR.	2		1/2"		
LATHE DISC.	1		1/2"	ON DISCONNECT BOX	
WASHER DISC.	1		1/2"		
DISC. RADAR	2		1/2"	IN A/C RM.	
RADAR RECTIFIER	2		1/4"	IN A/C ROOM	
COMM. XMFR.	1		1/4"	ON XMFR.	
REFR. 440 DISC.	1		1/2"	ON DISCONNECT BOX	
MNENG. J.B.	1		1/4"	ON BOX IN ENG. RM.	
SMOKE & FIRE J.B.	1		1/4"		
SND. PWRD. PHONE J.B.	1		1/4"		
DOOR ALARM J.B.	1		1/4"		
BTRY. CHARGER	2		1/4"	ON UNIT IN LKR. ON FOCSLE DECK IN PASSAGEWAY	
12.5 KVA. ISO. XMFR.	3		1/4"	IN DECK LOCKER	
25 KVA. ISO. XMFR.	3		1/4"		



NOTE
ALL LTRS. ARE TO BE BLACK EXCEPT AS NOTED

3	AS BUILT	17/12/73
2	ADDED ELEC. CONT. TABLE AS REQUIRED	11/12/73
1	ADDED STEERING CONTROL STA. SIGN. PER REQUEST	10/12/73
REV	DESCRIPTION	DATE
REVISIONS		
APPROVALS		
OFFICE COPY		
U.S. NAVAL SHIP SYSTEMS COMMAND		
WASHINGTON D.C. 20386		
OCEANOGRAPHIC RESEARCH SHIP		
AGOR (UTILITY) CLASS		
HALTER MARINE SERVICES, INC.		
P.O. BOX 29266 NEW ORLEANS, LA. 70129		
ELECTRICAL NAMEPLATES		
SCALE:	DATE:	HALTER
DRAWN BY: <i>W. J. ...</i>	10-11-73	DWG. NO.
CHK'D BY: <i>M-4</i>		
HALTER	2187	PART
HULL NO. 372	372	JOB NO. 2188
NAVSHIPS NO. AGOR 21-005-001		REV. 3

00007